

VARYNA STK-300

4k NIR/ICG Endoscopy Imaging System

4K NIR/ICG Endoscopy Camera Control Unit

4K Endoscope System STK-300

- Accurate overlay of fluorescent regions
- Conveys vivid details in visualization effectively
- Advanced technology for processing high-quality 4K images
- Integration of both still image and video capture functionality
- Smart control mechanisms for exposure & light sources
- Certification for safety standards at CF level

4K Native Camera STC-300

- 4K image sensor *2
- High frame rate (60fps)
- Ergonomic design
- IPX7 waterproof design

Medical LED Light Source STS-300

- Intelligent control over white & near-infrared light sources
- Utilization of LED technology
- High stability and long service light
- High color rendition
- Insert detection



4K Endoscopy Peripheral Devices



Medical Insufflator STIF-200/STIF-300

- Dual Pressure Monitor, Dual Flow Control
- High Flow
- Smoke Evacuation & Heatable
- Effective Temperature Control



Surgical Monitor STM-600/700/800

- Higher Color Depth & Wider Color Gamut
- Unique ACR Technology
- Versatile Connectivity & Display Modes
- Medical Grade Hygiene-friendly

Telescopes

- Working with the dual-combination endoscope using white fluorescent light, which offers a large depth of field ranging from 3mm to 200mm, fulfills the need for clear imaging at different observation distances during medical procedures.

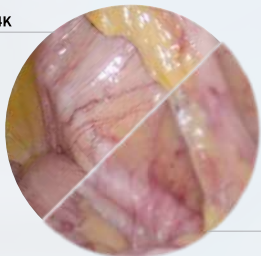


Model:	STIF-200	STIF-300
Input voltage	100V~240V	
Input frequency	50/60Hz	
Input power	150VA	
Gas type	Medical CO2 gas (Purity 99.99%)	
Filter interface	Tapered connection, diameter Φ 15mm	
Pressure range	1mmHg~30mmHg	
Pressure mode	Mode: Small cavity (for Kid) Pressure:1-15mmHg Mode: Normal cavity (for Adult) Pressure:1-30mmHg	
Weight	≤11kg	
Size (L*W*H)	407mm*350mm*142mm	
Flow regulation range	0.1L/min--50L/min	0.1L/min--35L/min
Heating function	Yes	Yes
Smoke evacuation	Yes	No
USB foot switch	Yes	No
Other functions	Self-check when powered on	Over-pressure release
	Intake air filtration	Under-pressure supplement
	Over-pressure alarm	Pipeline blockage alarm

Sizes	27 " 32 " 55 "
Resolution	3840*2160P (60Hz, 30Hz)
Port	12G-SDI,DVI 3G SDI*4,HDMI,12G-SDI 3G SDI*4,HDMI,12G-SDI,DVI
Viewing angle	horizontal 178°/vertical 178°

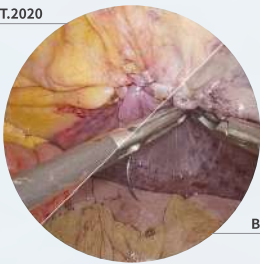
	4K ICG Laparoscope	4K ICG Laparoscope
Diameter	10mm	5mm
Viewing angle	0°/30°/45°	0°/30°/45°
Working length	≥344mm	≥344mm
Depth of field	3-200mm	3-200mm
Field of vision	80°	80°

4K



HD

BT.2020



BT.709

Full Imaging Chain

4K@60fps Full Imaging Chain

- 4 times of full HD with 4k resolution
- 3840 x 2160 4k resolution

BT.2020 Wide Color Range

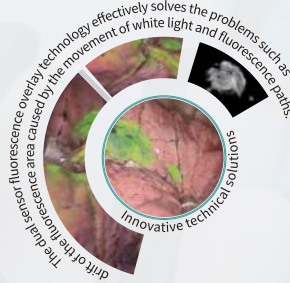
The BT.709 color range encompasses only 35.9% of BT.2020. When combined with 4K resolution, it can effectively portray intricate anatomical details, thereby enhancing the precision of surgical procedures.



Precision Overlay

White Light and Fluorescent Images, Precision Overlay.

- 6-axis Active Alignment technology
- Super high precision image stereo algorithm



Overlay Image

Pure, delicate, and drift free, overlay image.

- 3D Noise Reduce algorithm
- 2D Noise Reduce algorithm

4K ICG Endoscopy Imaging System



Before Optimization



After Optimization

Detail Presentation of the Overlay Area

The exclusive dual-path image fusion algorithm effectively retains intricate organizational details within the fluorescent region of the overlay image.



Monochrome Fluorescence



4K White Light



Multi-mode Fluorescence



Traditional Green Fluorescence



Noble Purple Fluorescent

Multi-mode Fluorescence



Thoracic

Lung segment identification, Nodule localization, Margin determination, and Lymph node tracing.



Hepatobiliary

Hepatic segment imaging, Microlesion identification, Lymph node tracing, Margin determination, and Biliary tract imaging.



Gynecology

Margin determination, Lymph node tracing, Nodule exploration



Urology

Margin determination, Microlesion identification, Lymph node tracing.



Gastrointestinal Surgery

Margin determination, Nodule exploration, Lymph node tracing. Anastomotic assessment.

Application Departments