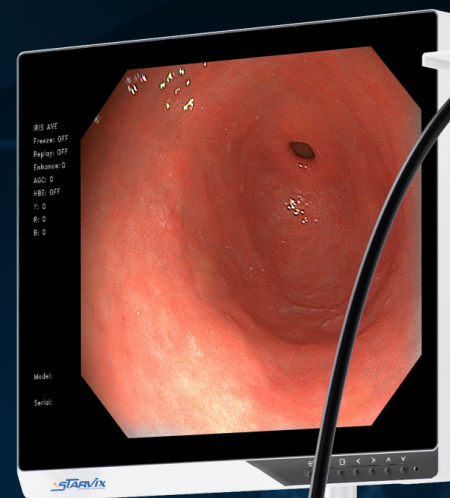




HD Video Endoscope System

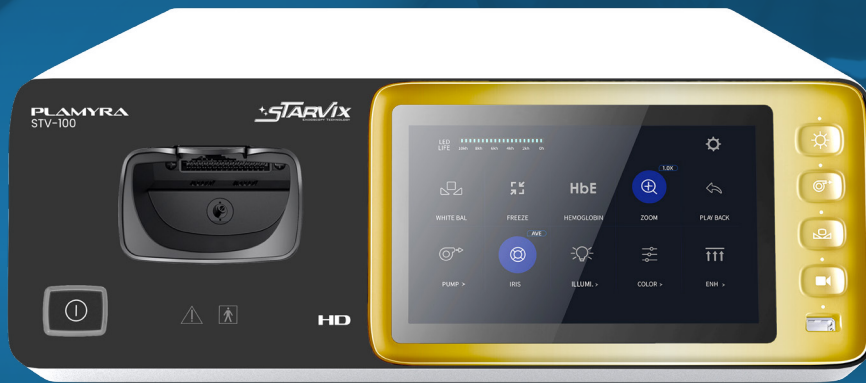
PLAMYRA STV-100



PLAMYRA STV-100

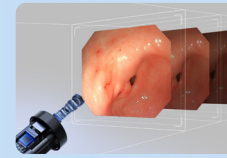
HD Endoscope Imaging System

Discover a new horizon with our innovative compact system, featuring an above-standard configuration. Experience the high-quality and cost-effective STV-100, a compact system that integrates multiple cutting-edge technological advancements. Stay one step ahead with our innovative solution and enjoy the comfort it provides.



New Interaction

User-friendly touchscreen interface with frequently used function shortcuts. Dual protection design for improved usability and convenience.

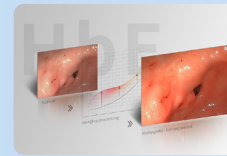


HD Image Quality

Equipped with an HD CMOS sensor, the STV-100 provides genuinely high-definition images for diagnostics. Enhanced further by cutting-edge digital processing technologies like hemoglobin enhancement (HbE) and digital chromoendoscopy.

Versatile Usage

Compact design eliminates the need for separate light source equipment. Easy to transmit and install and simple to utilize across various scenarios.

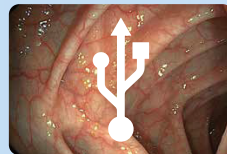


Hemoglobin Enhancement & Image Magnification

High color rendering, strong contrast, and enhances the mucosal vascular morphology to show blood vessels clearly. Four levels available to achieve detail magnification.

One-click Operation

Effortless Connectivity Instant one-click pairing of endoscope and processor. Drastically enhances endoscopy staff's work efficiency.



Multi-mode Adjustment & USB storage

Automatic and manual brightness adjustment modes. Peak, average, and automatic IRIS modes, with 12 levels of enhancement. Clinical images and videos can be stored.

Smart Startup

The system recognizes the endoscope type and automatically turns on commonly used functions. As well as, automatically shuts off the air pump and light source when the endoscope is removed



PLAMYRA STV-100

Video Gastrosopes/Colonoscopes



Fully Waterproof & One-Touch Connection

The STV-100 offers a fully waterproof design and a convenient one-touch connection, ensuring both convenience for your team and safety for your devices.



Distal End LED Light Source

The distal end of the device is equipped with an integrated LED light source, offering a lifespan of 10,000 hours. This design enables a slimmer outer diameter without sacrificing brightness or consistency, even with prolonged usage.

145° FoV Colonoscope

STV-100 offers 145° FoV colonoscopes, industry-leading for efficiency and error reduction. Expand your horizon with STV-100's technology.

Lightweight Handle & Keys

Styker prioritizes functionality and user experience in endoscope design. Lighter handles reduce fatigue, customizable shortcut buttons accommodate individual usage, ensuring comfort and personalized functionality.



Functions and Features

White balance	Balances the color temperature in your image.
HbE Enhancement	Highlights the mucosal capillary morphology
Image Enhancement	Structure/Edge/Color
IRIS	Average , Peak, Automatic
Storage	USB
Color adjustment	Adjustment of Y(Luminance), R(Red), or B(blue) component within 21 levels (from -10 to 10)
Freeze and playback	Freezes a real-time image and plays it back
Digital zoom	1/1.2/1.5/2x

Video Gastrosopes Specifications

Model	Working Length	Diameter of distal end	Diameter of insertion tube	Diameter of instrument channel	Depth of field	View of field	Range of bending
VG-ST1001	1050mm	9.6mm	9.6mm	2.8mm	2-100mm	140°	U210°D90°L100°R100°
VG-ST1002	1050mm	9.0mm	9.0mm	2.8mm	2-100mm	140°	U210°D90°L100°R100°

Video Colonoscopes Specifications

Model	Working Length	Diameter of distal end	Diameter of insertion tube	Diameter of instrument channel	Depth of field	View of field	Range of bending
VC-ST1001	1330mm	12.8mm	12.8mm	3.7mm	2-100mm	145°	U180°D180°L160°R160°
VC-ST1002	1680mm	12.8mm	12.8mm	3.7mm	2-100mm	145°	U180°D180°L160°R160°

Image Processor: STV-100 Specifications

Power supply :	Voltage: 100-240V AC Frequency: 50/60Hz Consumption electric power: 80VA
Size:	Dimension (L x W x H): 380*385*143mm Weight: 8.5kg
Medical Electrical	Type of protection against electric shock: Class I
Equipment Classification	
Output signals:	DVI*2, AV*2, SYNC*1, RGB*1, Y/C*1
White balance:	Automatic
Digital chromoendoscopy:	HbE (Hemoglobin Enhancement)
Structure enhancement:	1-4 level
Edge enhancement:	1-4 level
Color enhancement:	Red/Blue/Y(Luminance) - 21 levels
Storage:	USB (Image and video)
IRIS mode:	Average/Peak/Auto
Cooling Forced	-air cooling
Brightness control:	Manual/Auto
Air -feeding pump	4 levels available (off, low, medium, high)
Patient information:	the following data can be displayed on the monitor using the keyboard: Patient Name, Sex, Age, ID

STV-100 HD Endoscope Imaging System

In order to save the valuable but limited space on the cart for other peripheral, styker offers a compact design with LCD touch screen panel



STIP-100 Endoscopic Irrigation

Easy to use, activate irrigation through foot switch or remote button. Ensures safety with automatic shut-off after 20 seconds or continuous water supply. Adjustable flow up to 500ml/min, with flow setting display and automatic setting memory.



STIF-100 Endoscopic CO₂ Insufflation

The intelligent air pressure control ensures secure flow, preventing high or low pressure issues and minimizing operational errors. With one-touch operation and user-friendly interface, it can be seamlessly integrated into the main body of the endoscopy system.



STLT-100 Automatic Leakage Tester

Latest cantilever design for easy loading and unloading, ensuring robustness, durability, and space-saving. Detect pinhole leaks early to significantly reduce the failure rate.



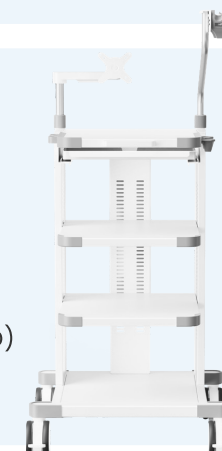
STM-200/300 Medical Grade Monitor

Medical grade high brightness monitor in different sizes available, all with a variety of most commonly used interfaces.



STT-100 Medical Trolley

Stainless Steel, 330mm*880mm*1085mm
4 Layers & Keyboard Drawer
Four-wheeled caster with locking mode
Overall dimension 1000(H) x 656(W) x 601 (D)







🌐 www.starvix.us

✉ info@starvix.us

☎ +1 567 404 5925

📍 Coastal Highway,
Delaware 19958, Sussex, USA.

