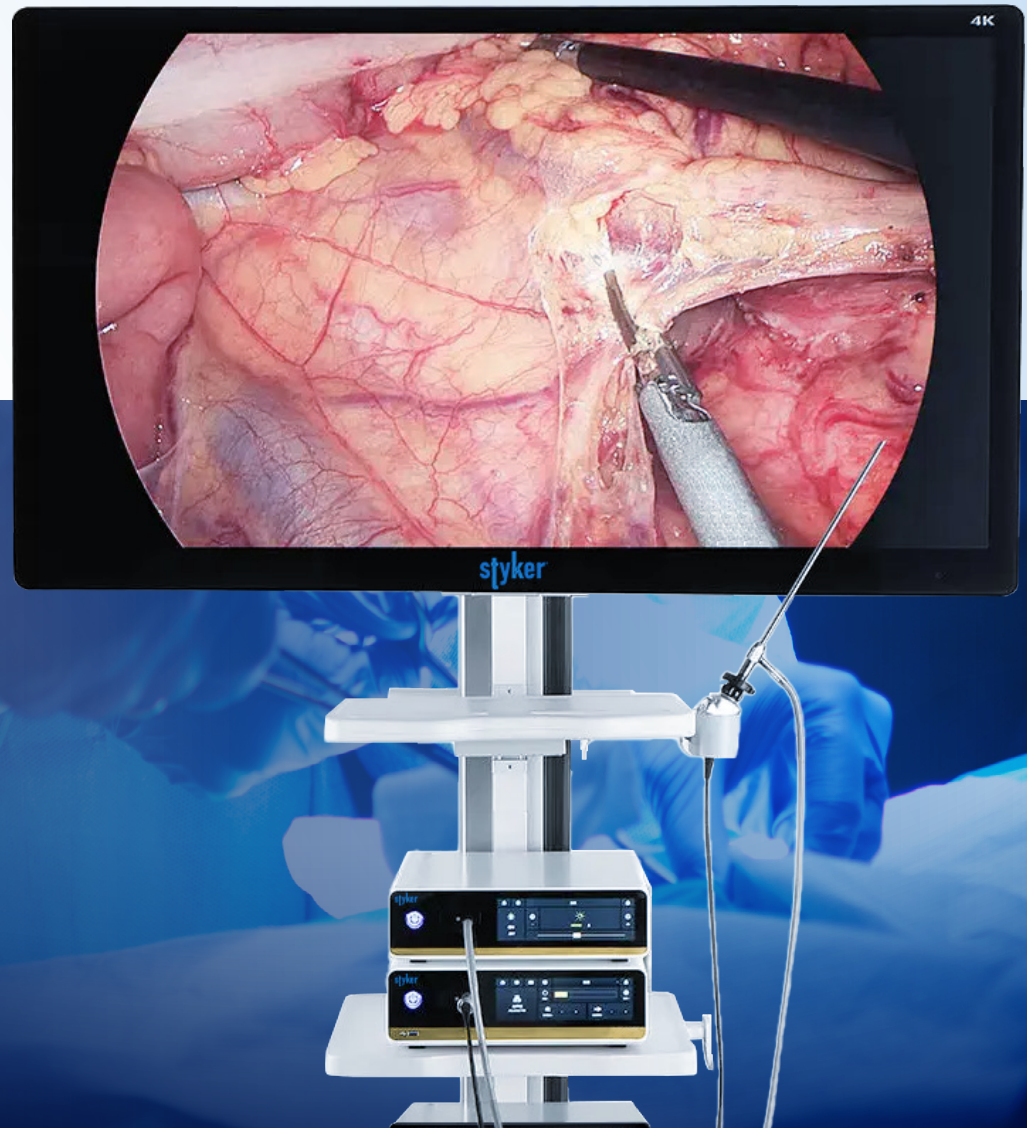
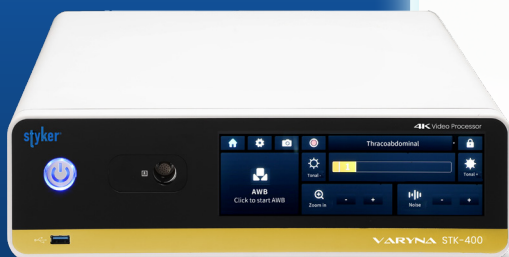


stzyker®



VARYNA STK-400
4k UHD Rigid Endoscopy System

4K Endoscopy Camera Control Unit



4K Endoscope System STK-400

- 3840×2160P@60fps
- Low glare, anti-fatigue
- Up to 5x electronic magnification
- White balance automatic adjustment and memory
- Intelligent exposure
- 4K one-click recording

4K Native Camera STC-400

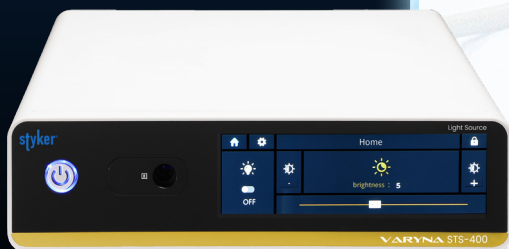
- Ultra High-definition
- The waterproof grade is up to IPX7
- Controlled by 4 buttons
- Multi-lens versatility
- One-click Focusing/Broad compatibility

Medical LED Light Source STS-400

- High color temperature, luminous flux, and color rendering in LED
- Low energy consumption and long lifespan
- Significant cost reduction for medical providers

Special imaging mode	DCE, DAI, EM, HDR, HLS
Output	3G-SDI*4, DVI*1, HDMI*1
Video resolution	3840*2160P@60Hz, 30Hz
Touch screen size	≥7.84 inches
Storage	USB2.0*2, USB3.0*1
Storage resolution	3840*2160P@60Hz
Video coding protocol	H.264
Dimensions(L×W×H)	410mm*359mm*120mm (±%10mm)
Weight	5.5kg (±%15)

Mode	Standard, Auto focus
Image magnification	5X electronic magnification
Video resolution	3840*2160
IP ratings	IPX7
Sterilization method	Low temperature plasma sterilization
Weight	500g (±%15)
Button settings	4 buttons programmable, programmable functions: AWB, video, capture, freeze, zoom, manual focus +, manual focus -. Auto focus camera head includes one more auto focus function.



Output port	10mm general interface of guide beam
Light source type	LED
Light source parameters	Luminous flux 1800lm, color temperature 6500K
Brightness control	10 adjustable brightness levels
LED chip life	≥60000h
Touch screen size	≥7.84 inches
Dimensions (L×W×H)	410mm*359mm*110mm (±%10mm)
Weight	8kg (±%15)

4K Endoscopy Peripheral Devices



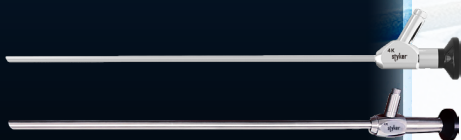
Medical Insufflator STIF-200/STIF-300

- 7 inches touch screen
- 1-50L/min Adjustment Rate and 50L/min Flow Rate
- 3-25 mmHg Pressure Range
- Smoke Evacuation Function and Automatic Heating (optional)



Surgical Monitor STM-600/700/800

- Higher Color Depth & Wider Color Gamut
- Unique ACRé Technology
- Versatile Connectivity & Display Modes
- Medical Grade Hygiene-friendly



Telescopes

- Working with the dual-combination endoscope using white fluorescent light, which offers a large depth of field ranging from 3mm to 200mm, fulfills the need for clear imaging at different observation distances during medical procedures.

Model:	STIF-200	STIF-300
Input voltage	100V-240V	
Input frequency	50/60Hz	
Input power	150VA	
Gas type	Medical CO2 gas (Purity 99.99%)	
Filter interface	Tapered connection, diameter Φ 15mm	
Pressure range	1mmHg~30mmHg	
Pressure mode	Mode: Small cavity (for Kid) Pressure:1-15mmHg Mode: Normal cavity (for Adult) Pressure:1-30mmHg	
Weight	\leq 11kg	
Size (L*W*H)	407mm*350mm*142mm	
Flow regulation range	0.1L/min--50L/min	0.1L/min--35L/min
Heating function	Yes	Yes
Smoke evacuation	Yes	No
USB foot switch	Yes	No
Other functions	Self-check when powered on	Over-pressure release
	Intake air filtration	Under-pressure supplement
	Over-pressure alarm	Pipeline blockage alarm

Sizes	27 " 32 " 55 "	
Resolution	1920x1080 3840*2160P 3840*2160	(60Hz, 30Hz)
Port	12G-SDI,DVI 3G SDI*4,HDMI,12G-SDI 3G SDI*4,HDMI,12G-SDI,DVI	
Viewing angle	horizontal 178°/vertical 178°	

	Laparoscope	Hysteroscope
Diameter	10mm	inspection/operation scope - 2.9mm/4mm
Viewing angle	0°/30°/45°	0°/12°/30°
Working length	\geq 344mm	\geq 302mm
Depth of field	3-200mm	3-50mm
Field of vision	80°	70°
Optional	White light/Fluorescence	supporting surgical instruments

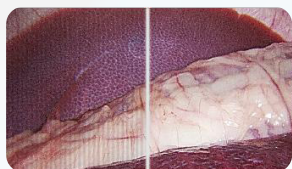
Special Imaging Mode



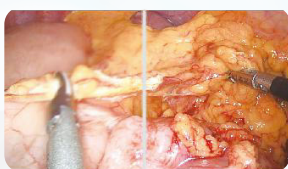
DCE - Detail Enhancement



DAI - Dark Area Improvement



EM - Expelling Moiré

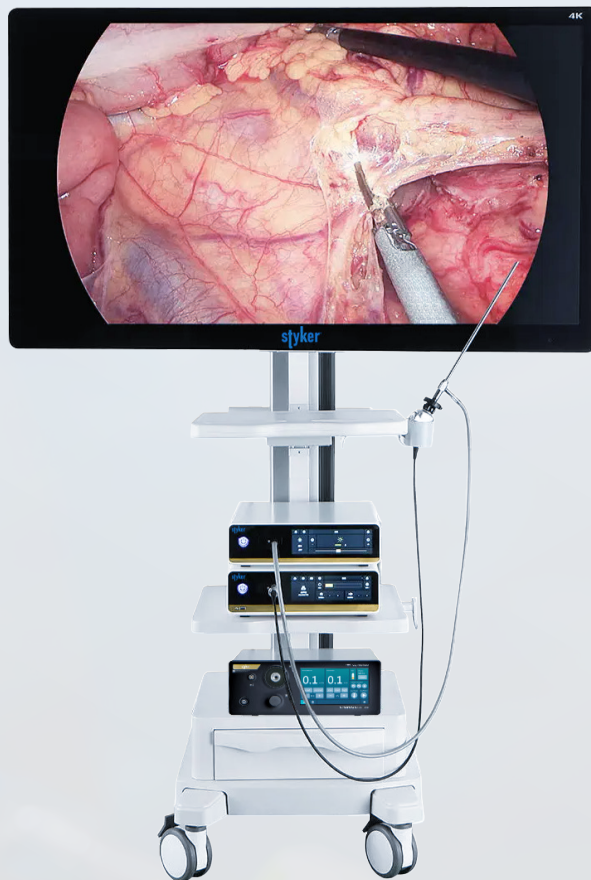


HDR - High Dynamic Range



HLS - Highlight Suppression

4K Rigid Endoscopy System



Complete Set of Imaging Chain

The Ultra HD endoscope combines image adjustments close to clinical requirements. This device excels in delivering exceptionally clear, high-contrast, sharp, and accurately color-restored clinical images.

- Outstanding clarity with no distortion, offering high resolution.
- Endures 500 times of high-temperature and autoclave sterilization.
- Equipped with an anti-fogging feature for clear vision.
- Incorporates a distinctive sealing design to enhance durability.
- Utilizes a sapphire-sealed window to boost resistance to wear.
- Compatible with camera heads from various brands.

Auto Focus

Employing cutting-edge autofocus algorithm technology, organs and tissues' colors are truly restored without the need for repetitive focusing.



Thoracic

Lung segment identification, Nodule localization, Margin determination, and Lymph node tracing.



Hepatobiliary

Hepatic segment imaging, Microlesion identification, Lymph node tracing, Margin determination, and Biliary tract imaging.



Gynecology

Margin determination, Lymph node tracing, Nodule exploration



Urology

Margin determination, Microlesion identification, Lymph node tracing.



Gastrointestinal Surgery

Margin determination, Nodule exploration, Lymph node tracing. Anastomotic assessment.

Application
Departments