

stzyker®



**VARYNA** STK-300

4k NIR/ICG Endoscopy Imaging System

# 4K NIR/ICG Endoscopy Camera Control Unit

## 4K Endoscope System STK-300

- Accurate overlay of fluorescent regions
- Conveys vivid details in visualization effectively
- Advanced technology for processing high-quality 4K images
- Integration of both still image and video capture functionality
- Smart control mechanisms for exposure & light sources
- Certification for safety standards at CF level

## 4K Native Camera STC-300

- 4K image sensor \*2
- High frame rate (60fps)
- Ergonomic design
- IPX7 waterproof design

## Medical LED Light Source STS-300

- Intelligent control over white & near-infrared light sources
- Utilization of LED technology
- High stability and long service light
- High color rendition
- Insert detection

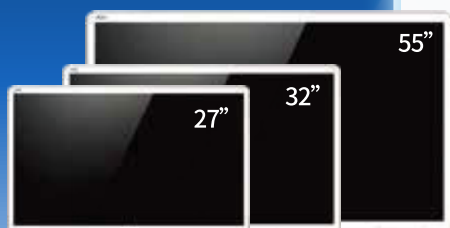


# 4K Endoscopy Peripheral Devices



## Medical Insufflator STIF-200/STIF-300

- Dual Pressure Monitor, Dual Flow Control
- High Flow
- Smoke Evacuation & Heatable
- Effective Temperature Control



## Surgical Monitor STM-600/700/800

- Higher Color Depth & Wider Color Gamut
- Unique ACR Technology
- Versatile Connectivity & Display Modes
- Medical Grade Hygiene-friendly

Model:	STIF-200	STIF-300
Input voltage	100V~240V	
Input frequency	50/60Hz	
Input power	150VA	
Gas type	Medical CO2 gas (Purity 99.99%)	
Filter interface	Tapered connection, diameter Φ 15mm	
Pressure range	1mmHg~30mmHg	
Pressure mode	Mode: Small cavity (for Kid) Pressure:1-15mmHg Mode: Normal cavity (for Adult) Pressure:1-30mmHg	
Weight	≤11kg	
Size (L*W*H)	407mm*350mm*142mm	
Flow regulation range	0.1L/min--50L/min	0.1L/min--35L/min
Heating function	Yes	Yes
Smoke evacuation	Yes	No
USB foot switch	Yes	No
Other functions	Self-check when powered on Intake air filtration Over-pressure alarm	Over-pressure release Under-pressure supplement Pipeline blockage alarm
Sizes	27 "   32 "   55 "	
Resolution	1920x1080   3840*2160P   3840×2160 (60Hz, 30Hz)	
Port	12G-SDI,DVI   3G SDI*4,HDMI,12G-SDI   3G SDI*4,HDMI,12G-SDI,DVI	
Viewing angle	horizontal 178°/vertical 178°	



### Thoracic

Lung segment identification, Nodule localization, Margin determination, and Lymph node tracing.



### Hepatobiliary

Hepatic segment imaging, Microlesion identification, Lymph node tracing, Margin determination, and Biliary tract imaging.



### Gynecology

Margin determination, Lymph node tracing, Nodule exploration



### Urology

Margin determination, Microlesion identification, Lymph node tracing.



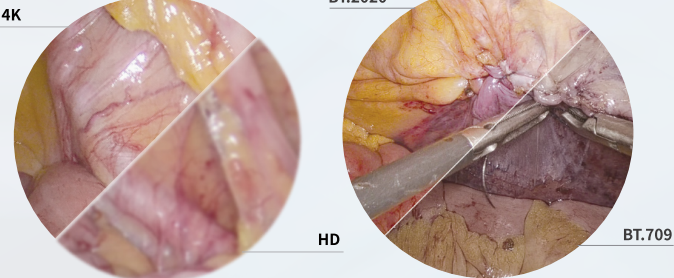
### Gastrointestinal Surgery

Margin determination, Nodule exploration, Lymph node tracing. Anastomotic assessment.

Application  
Departments



# 4K ICG Endoscopy Imaging System

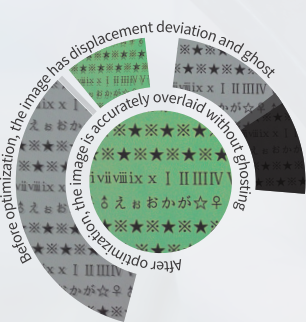


## Full Imaging Chain

- 4K@60fps Full Imaging Chain
- 4 times of full HD with 4k resolution
- 3840 x 2160 4k resolution

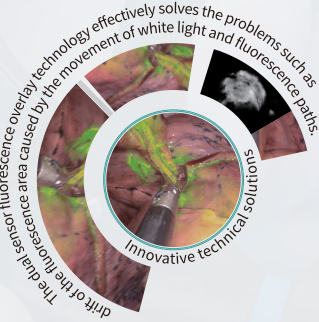
## BT.2020 Wide Color Range

The BT.709 color range encompasses only 35.9% of BT.2020. When combined with 4K resolution, it can effectively portray intricate anatomical details, thereby enhancing the precision of surgical procedures.



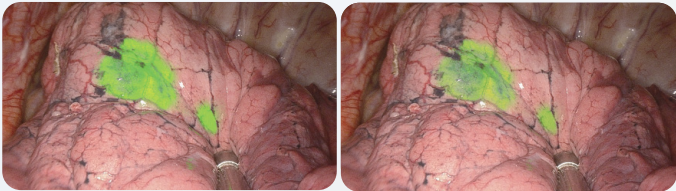
## Precision Overlay

- White Light and Fluorescent Images, Percision Overlay.
- 6-axis Active Alignment technology
- Super high precision image stereo algorithm



## Overlay Image

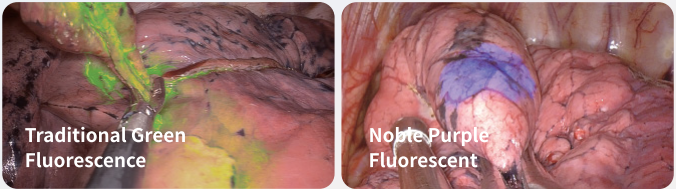
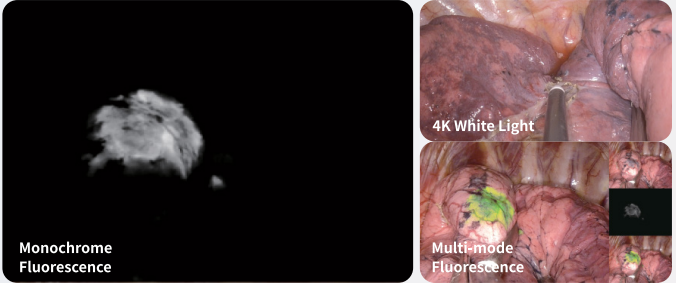
- Pure, delicate, and drift free, overlay image.
- 3D Noise Reduce algorithm
- 2D Noise Reduce algorithm



Before Optimization      After Optimization

## Detail Presentation of the Overlay Area

The exclusive dual-path image fusion algorithm effectively retains intricate organizational details within the fluorescent region of the overlay image.



## Multi-mode Fluorescence