

styker®



**VARYNA** STK-200

2K Rigid Endoscopy System

# 2K Endoscopy Camera Control Unit

## FHD Endoscope System STK-200

- High Quality Color Restoration
- Optical Homogeneous Zoom
- Large Depth of Field
- One-click, Plug and Play
- Full Touch Screen Operating System
- USB Storage

Special imaging mode	DCE, DAI, HLS
Output	DVI*1, HDMI*1
Video resolution	1920x1080@60Hz, 30Hz
Touch screen size	≥7.84 inches
Storage	USB2.0*2, USB3.0*1
Storage resolution	1920x1080
Video coding protocol	H.264
Dimensions(L×W×H)	410mm*359mm*120mm (±10mm)
Weight	5.5kg (±15)

## FHD Native Camera STC-200

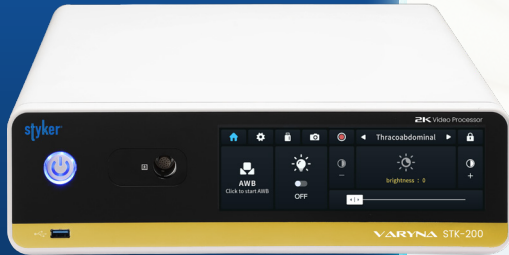
- Ergonomic camera head handle: Lightweight and comfortable
- One camera head serves a variety of fields
- Full lamination touch screen, quick parameter customization
- 1-click: Photo, video, & auto-storage for speed and convenience
- Camera head links to control unit & light source for centralized control

Image magnification	5X electronic magnification
IP ratings	IPX7
Sterilization method	Low temperature plasma sterilization
Button settings	4 buttons programmable, programmable functions: AWB, video, capture, freeze, zoom, manual focus +, manual focus -.
Weight	500g (±15)

## Medical LED Light Source STS-400

- High color temperature, luminous flux, and color rendering in LED
- Low energy consumption and long lifespan
- Significant cost reduction for medical providers

Output port	10mm general interface of guide beam
Light source type	LED
Light source parameters	Luminous flux 1800lm, color temperature 6500K
Brightness control	10 adjustable brightness levels
LED chip life	≥60000h
Touch screen size	≥7.84 inches
Dimensions (L×W×H)	410mm*359mm*110mm (±10mm)
Weight	8kg (±15)





# FHD Endoscopy Peripheral Devices



## Medical Insufflator STIF-200/STIF-300

- Dual Pressure Monitor, Dual Flow Control
- High Flow
- Smoke Evacuation & Heatable
- Effective Temperature Control

## Surgical Monitor STM-500

- Higher Color Depth & Wider Color Gamut
- Unique ACRé Technology
- Versatile Connectivity & Display Modes
- Medical Grade Hygiene-friendly

## Telescopes

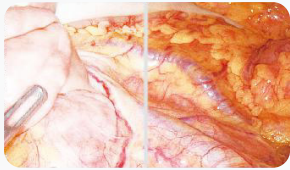
- Working with the dual-combination endoscope using white fluorescent light, which offers a large depth of field ranging from 3mm to 200mm, fulfills the need for clear imaging at different observation distances during medical procedures.

Model:	STIF-200	STIF-300
Input voltage	100V~240V	
Input frequency	50/60Hz	
Input power	150VA	
Gas type	Medical CO2 gas (Purity 99.99%)	
Filter interface	Tapered connection, diameter Φ 15mm	
Pressure range	1mmHg~30mmHg	
Pressure mode	Mode: Small cavity (for Kid) Pressure:1-15mmHg Mode: Normal cavity (for Adult) Pressure:1-30mmHg	
Weight	≤11kg	
Size (L*W*H)	407mm*350mm*142mm	
Flow regulation range	0.1L/min--50L/min	0.1L/min--35L/min
Heating function	Yes	Yes
Smoke evacuation	Yes	No
USB foot switch	Yes	No
Other functions	Self-check when powered on	Over-pressure release
	Intake air filtration	Under-pressure supplement
	Over-pressure alarm	Pipeline blockage alarm

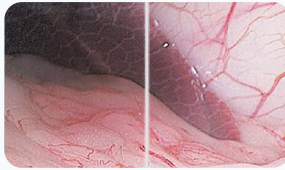
Sizes	27 "   32 "   55 "	
Resolution	1920x1080   3840*2160P   3840*2160	(60Hz, 30Hz)
Port	12G-SDI,DVI   3G SDI*4,HDMI,12G-SDI   3G SDI*4,HDMI,12G-SDI,DVI	
Viewing angle	horizontal 178°/vertical 178°	

	Laparoscope	Hysteroscope
Diameter	10mm	inspection/operation scope - 2.9mm/4mm
Viewing angle	0°/30°/45°	0°/12°/30°
Working length	≥344mm	≥302mm
Depth of field	3-200mm	3-50mm
Field of vision	80°	70°
Optional	White light/Fluorescence	supporting surgical instruments

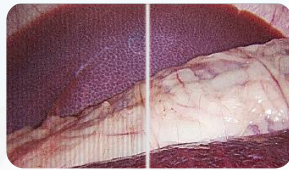
## Special Imaging Mode



HLS - Highlight Suppression



DAI - Dark Area Improvement



EM - Expelling Moiré

In addition to providing standard natural white images, we offer three different digital algorithms for presentation. These algorithms prove valuable in identifying tissues under specific conditions and facilitating precise observation of the fine structures of lesions and vascular changes.

## 2K Rigid Endoscopy System



## Complete Set of Imaging Chain

The Ultra HD endoscope combines image adjustments close to clinical requirements. This device excels in delivering exceptionally clear, high-contrast, sharp, and accurately color-restored clinical images.

- Outstanding clarity with no distortion, offering high resolution.
- Endures 500 times of high-temperature and autoclave sterilization.
- Equipped with an anti-fogging feature for clear vision.
- Incorporates a distinctive sealing design to enhance durability.
- Utilizes a sapphire-sealed window to boost resistance to wear.
- Compatible with camera heads from various brands.

## High Quality Color Restoration

We use leading imaging technology which employs three separate CMOS, each one receiving filtered RGB color and forms 1920\*1080 pixels image output. This provides a wider color gamut and superior image quality, and to the greatest extent of human visible color range.



### Thoracic

Lung segment identification, Nodule localization, Margin determination, and Lymph node tracing.



### Hepatobiliary

Hepatic segment imaging, Microlesion identification, Lymph node tracing, Margin determination, and Biliary tract imaging.



### Gynecology

Margin determination, Lymph node tracing, Nodule exploration



### Urology

Margin determination, Microlesion identification, Lymph node tracing.



### Gastrointestinal Surgery

Margin determination, Nodule exploration, Lymph node tracing. Anastomotic assessment.

Application  
Departments