

styker®

HD Video Endoscope System

PLAMYRA STV-200

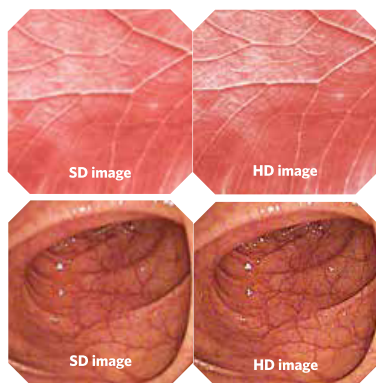


📍 16192 Coastal Highway, Delaware 19958, Sussex, USA
🌐 www.stykerr.com ✉ info@stykerr.com ☎ +1 567 404 5925



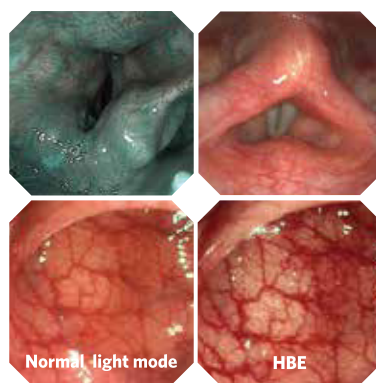


STV-200 made history as the first HD endoscopy system with independent intellectual property rights, featuring Optical chromoendoscopy technique. Its purpose is to enable early cancer diagnosis and treatment.



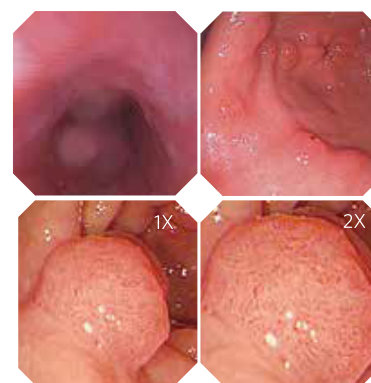
High Definition Images

Our advanced system integrates high-resolution CCD and digital image processing for vivid color preservation, superior image quality, and confident medical diagnoses.



Compound Band Imaging (CBI) & (HbE) Hemoglobin Enhancement

STV-200 utilizes CBI technology, enhancing early cancer detection, improving examination quality, and reducing unnecessary biopsies. This improves accuracy and efficiency in cancer diagnostics. The hemoglobin enhancement function improves the projection and clarity of vein patterns.



Automatic Brightness Control & Electronic Magnification

STV-200 has a unique new form of automatic brightness control. This advanced system reduces light halation and provides images that are easier on the physicians eyes. Realize HD detail magnification of mucosa and help to find small lesions.



Multiple Light Sources For Selection

The PLAMYRA STV-200 provides versatile light source choices (Xenon lamp or LED) to meet clinical brightness needs.

Ergonomic & Lightweight Handle Design

The handle fits different hand sizes, ensuring comfort and convenience during operations. Styker's reduces handle weight to alleviate fatigue during long-term use, enhancing the operating experience.

Brand New Nozzle Design

The new design enables quick delivery of air and water, ensuring a clear field of vision. Furthermore, the brand-new design separates the gas and water supply, allowing rapid drying of the lens after cleaning, ensuring a clear sight.

Flexible Bending Section

Enables complete observation without blind spots, reducing missed diagnoses.

Advanced Water-jet Function

The STV-200 system-equipped endoscope ensures a clean mucous membrane and clear visibility, allowing doctors to quickly locate bleeding points.

Superior Insertion Tube

The new material offers excellent elasticity and lubricity for a smoother operation experience. It enhances patient comfort while aiding doctors in performing procedures with greater efficiency.

Specifications

Image Processor: STV-200

Power Supply:	Voltage: 100-240V AC Frequency: 50/60Hz
Size:	Dimension (W x H x D): 470*105*420mm Weight: 8.59kg
Medical Electrical Equipment Classification	Type of protection against electric shock: Class I
Output signals:	DVI*1, AV*2, SYNC*1, RGB*1, Y/C*1
White balance:	Automatic
Digital chromoendoscopy:	HbE (Hemoglobin Enhancement)
Enhancement:	1 - 4 levels
Color enhancement:	Red/Blue
Storage:	USB (Image and video)
IRIS mode:	Average/Peak/Auto
Patient information	Patient data: the following data can be displayed on the monitor using the keyboard: Patient Name, Sex, Age

LED Light Source: STL-200

Power Supply	Voltage: 100-240V AC Frequency: 50/60Hz Consumption electric power: 150VA
Size	Dimension (L x W x H): 480*400*165mm Weight: 9.22kg
Illumination	2LED
Life Indicator:	10,000H
Chromoendoscopy	CBI
Cooling	Forced-air cooling:
Air-feeding pump:	4 levels available (off, low, medium, high)

Video Bronchoscopy Models

Model	Working Length	Diameter of distal end	Diameter of insertion tube	Diameter of inner channel	Depth of field	View of field	Range of bending
VB-ST2001	600mm	4.9mm	4.9mm	2.0mm	3-50mm	120°	U160°D130°
VB-ST2002	600mm	5.7mm	5.7mm	2.0mm	3-50mm	120°	U160°D130°
VB-XST2003	600mm	2.8mm	2.8mm	1.2mm	2-100mm	120°	U210°D130°L120°R120°
VB-XST2004	600mm	3.8mm	3.8mm	2.2mm	2-100mm	120°	U210°D130°L120°R120°
VB-XST2005	600mm	4.9mm	4.9mm	2.2mm	2-100mm	120°	U210°D130°L120°R120°
VB-XST2006	600mm	4.9mm	4.9mm	3.0mm	2-100mm	120°	U210°D130°L120°R120°
VB-XST2007	600mm	5.8mm	5.8mm	3.2mm	2-100mm	120°	U210°D130°L120°R120°

STV-200/STL-200 Endoscope Imaging System

HD endoscopy system with optical chromo endoscopy technique with LED and xenon lamp light source. Features a higher brightness and authenticity of colour.



STIP-100 Endoscopic Irrigation

Easy to use, activate irrigation through foot switch or remote button. Ensures safety with automatic shut-off after 20 seconds or continuous water supply. Adjustable flow up to 500ml/min, with flow setting display and automatic setting memory.



STIF-100 Endoscopic CO₂ Insufflation

The intelligent air pressure control ensures secure flow, preventing high or low pressure issues and minimizing operational errors. With one-touch operation and user-friendly interface, it can be seamlessly integrated into the main body of the endoscopy system.



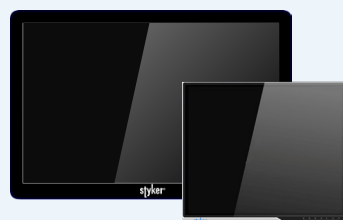
STLT-100 Automatic Leakage Tester

Latest cantilever design for easy loading and unloading, ensuring robustness, durability, and space-saving. Detect pinhole leaks early to significantly reduce the failure rate.



STM-200/300 Medical Grade Monitor

Medical grade high brightness monitor in different sizes available, all with a variety of most commonly used interfaces.



STT-100 Medical Trolley

Stainless Steel, 330mm*880mm*1085mm
4 Layers & Keyboard Drawer
Four-wheeled caster with locking mode
Overall dimension 1000(H) x 656(W) x 601 (D)

